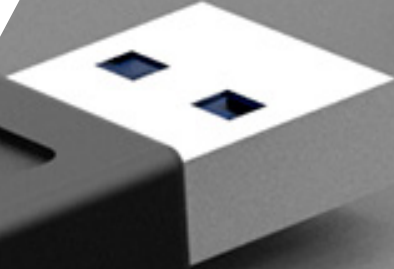
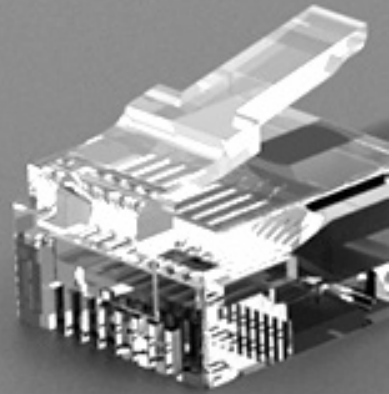


STAND.CONNECT CC

Bridge between your
control system and your
workstation computer.



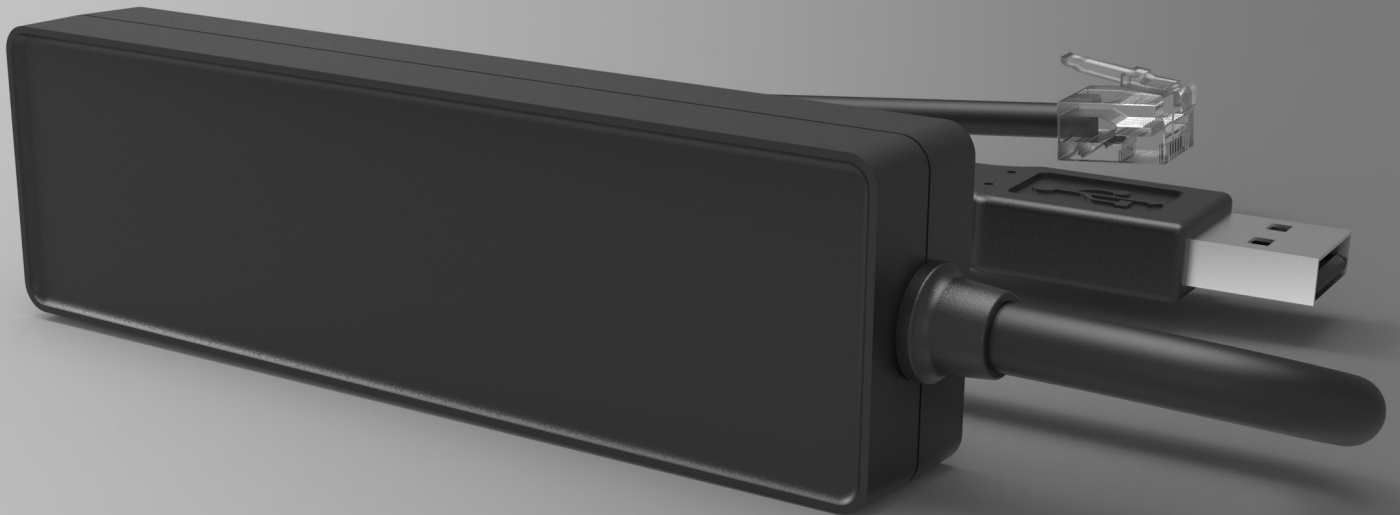
Description

The CON.STAND PC software allows you to set the control on the screen according to your needs.

The combination of the STAND.CONNECT CC with LIVE.STAND from Windows 10 enables you to operate your OMT sit-stand table and reminds you to use it regularly for the benefit of your health.

Your successes in the form of additional calories burned are displayed and statistically recorded.

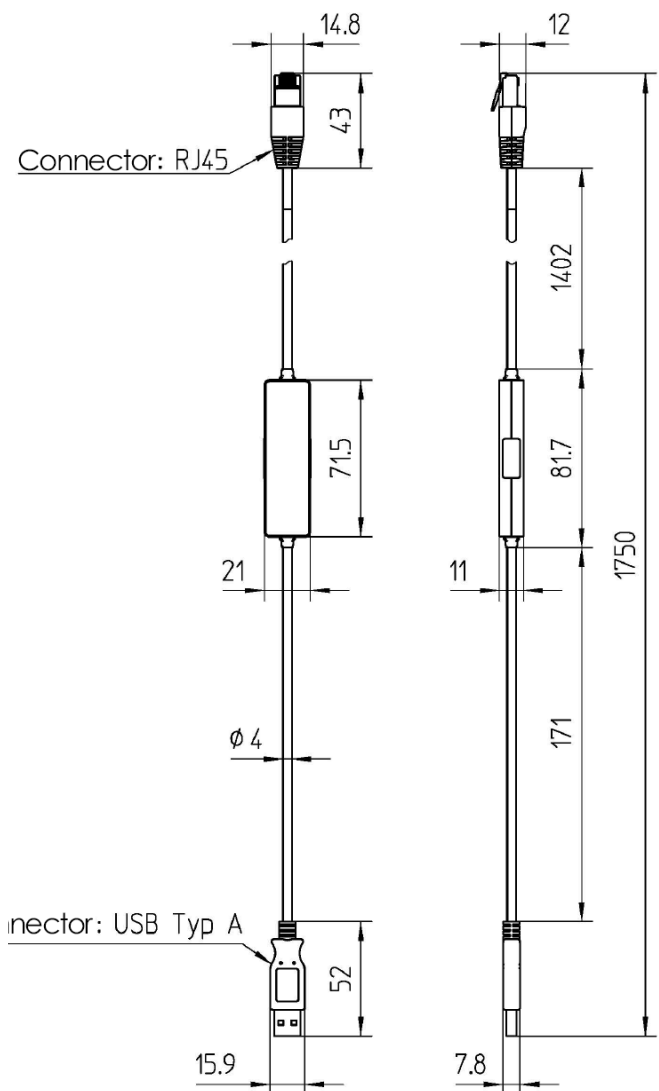
- USB 2.0 connection
- Plug & Work
(no driver installation necessary)
- compatible with STAND.CONTROL C1
- compatible with CON.STAND
for Windows (from Windows 10)
- compatible with LIVE.STAND
for Windows (from Windows 10)



Color
RAL 9005

Technical data

Dimensions (L x W x H)	71,5 x 21 x 11 mm
Weight	0,044 kg
Environmental conditions during transport & storage	-25 °C to +70 °C at 5 % to 90 % relative humidity. (non-condensing), with +38 °C max. dew point; Temperatures from +55 °C to +70 °C only for 24 h max.
Environmental conditions in operation	+5°C to +40°C at 10 % to 85 % relative humidity (non-condensing), with +27 °C max. dew point
IP class	IP 20 (protection class according to EN 60529)
Connections	USB 2.0 RJ45 plug



O|M|T

Oelschläger **Metalltechnik** GmbH
Hertzstraße 1-3
27318 Hoya
Germany

Phone: +49 (0) 42 51-816-0
Mail: info@oelschlaeger.de

CEO:
Daniela Hoge
Harald Grams

Commercial Register:
Walsrode HRB 31030
Court of jurisdiction: Hoya
VAT ID No.: DE 183195508

