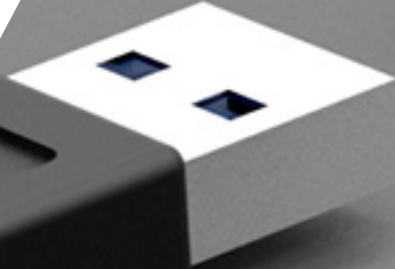
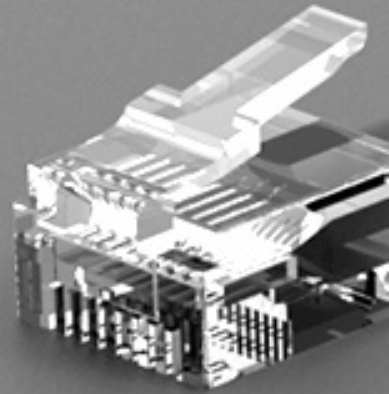


# STAND.CONNECT CC

---

Bridge between your  
control system and your  
workstation computer.



# Description

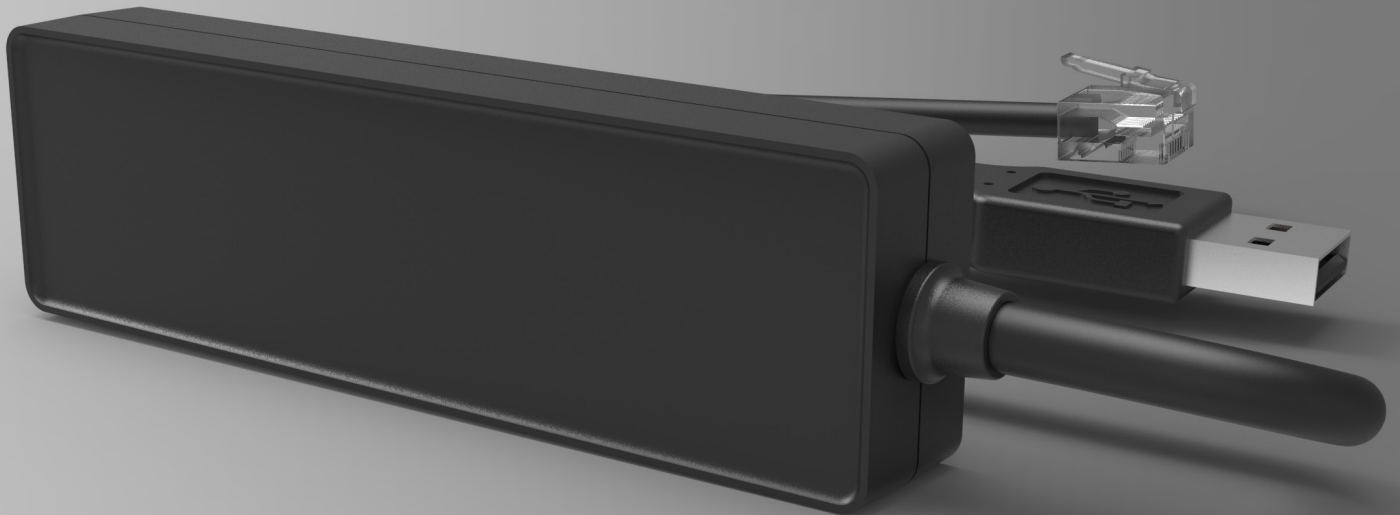
---

The CON.STAND PC software allows you to set the control on the screen according to your needs.

The combination of the STAND.CONNECT CC with LIVE.STAND from Windows 10 enables you to operate your OMT sit-stand table and reminds you to use it regularly for the benefit of your health.

Your successes in the form of additional calories burned are displayed and statistically recorded.

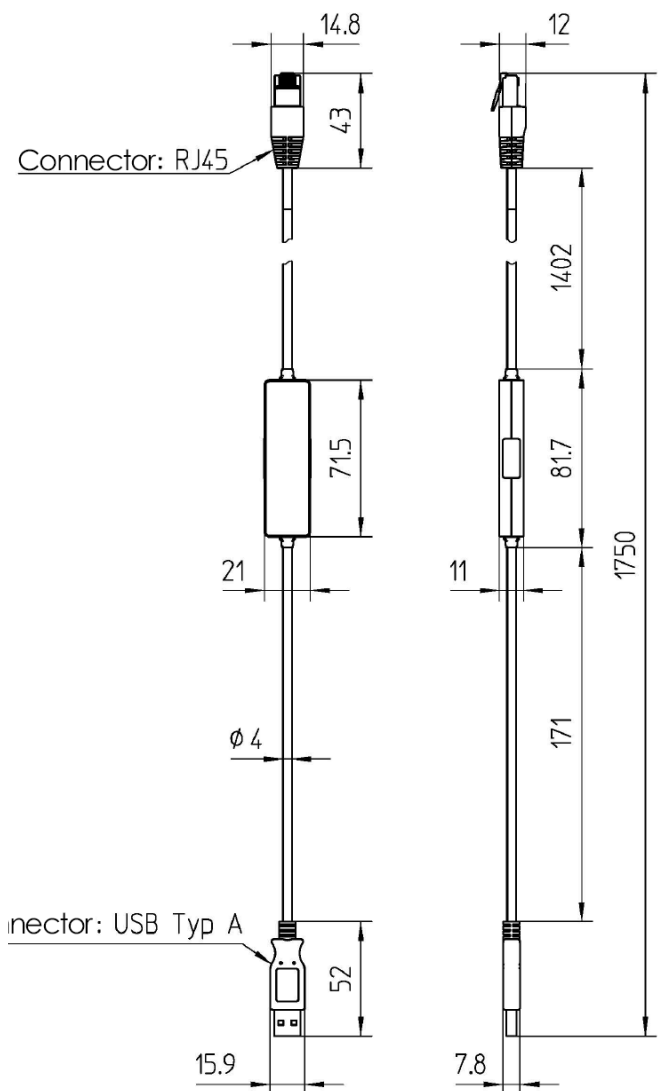
- USB 2.0 connection
- Plug & Work  
(no driver installation necessary)
- compatible with STAND.CONTROL C1
- compatible with CON.STAND  
for Windows (from Windows 10)
- compatible with LIVE.STAND  
for Windows (from Windows 10)



Color  
RAL 9005

# Technical data

<b>Dimensions (L x W x H)</b>	71,5 x 21 x 11 mm
<b>Weight</b>	0,044 kg
<b>Environmental conditions during transport &amp; storage</b>	-25 °C to +70 °C at 5 % to 90 % relative humidity. (non-condensing), with +38 °C max. dew point; Temperatures from +55 °C to +70 °C only for 24 h max.
<b>Environmental conditions in operation</b>	+5°C to +40°C at 10 % to 85 % relative humidity (non-condensing), with +27 °C max. dew point
<b>IP class</b>	IP 20 (protection class according to EN 60529)
<b>Connections</b>	USB 2.0 RJ45 plug



# O|M|T

Oelschläger **Metalltechnik** GmbH  
Hertzstraße 1-3  
27318 Hoya  
Germany

---

Phone: +49 (0) 42 51-816-0  
Mail: [info@oelschlaeger.de](mailto:info@oelschlaeger.de)

CEO:  
Daniela Hoge | Harald Grams

Commercial Register:  
Walsrode HRB 31030 Court of  
jurisdiction: Hoya VAT ID No.:  
DE 183195508